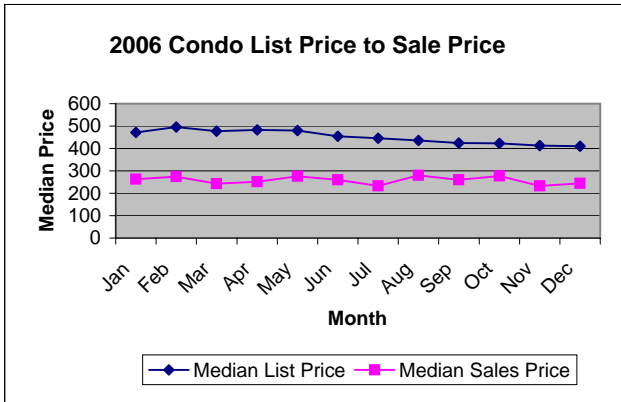
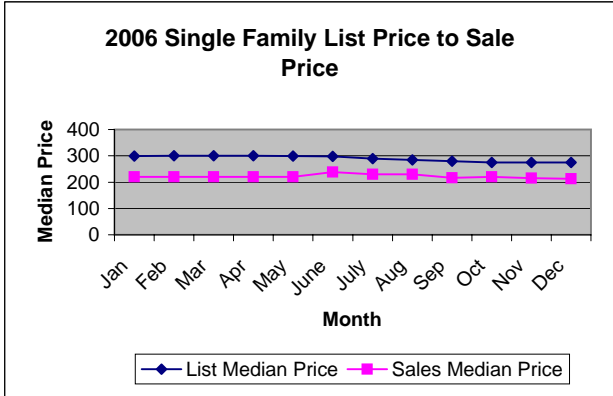


PINELLAS COUNTY - Residential Sales & Listing Analysis - DECEMBER 2006



DECEMBER	UNITS	LISTINGS	
		SF	Condo
Price Class			
\$29,999 or under		4	0
\$30,000 - \$39,999		5	2
\$40,000 - \$49,999		12	8
\$50,000 - \$59,999		12	27
\$60,000 - \$69,999		24	49
\$70,000 - \$79,999		41	84
\$80,000 - \$89,999		66	137
\$90,000 - \$99,999		77	152
\$100,000 - \$119,999		164	279
\$120,000 - \$139,999		414	463
\$140,000 - \$159,999		541	497
\$160,000 - \$179,999		683	386
\$180,000 - \$199,999		791	343
\$200,000 - \$249,999		1564	596
\$250,000 - \$299,999		1299	546
\$300,000 - \$399,999		1323	863
\$400,000 - \$499,999		713	500
\$500,000 - \$599,999		491	331
\$600,000 - \$699,999		378	239
\$700,000 - \$799,999		324	190
\$800,000 - \$899,999		208	141
\$900,000 - \$999,999		155	136
Over \$1,000,000		587	475
Totals		9876	6444
Median (thousands) \$		274.9	274.9
Average (thousands) \$		425.8	410.5

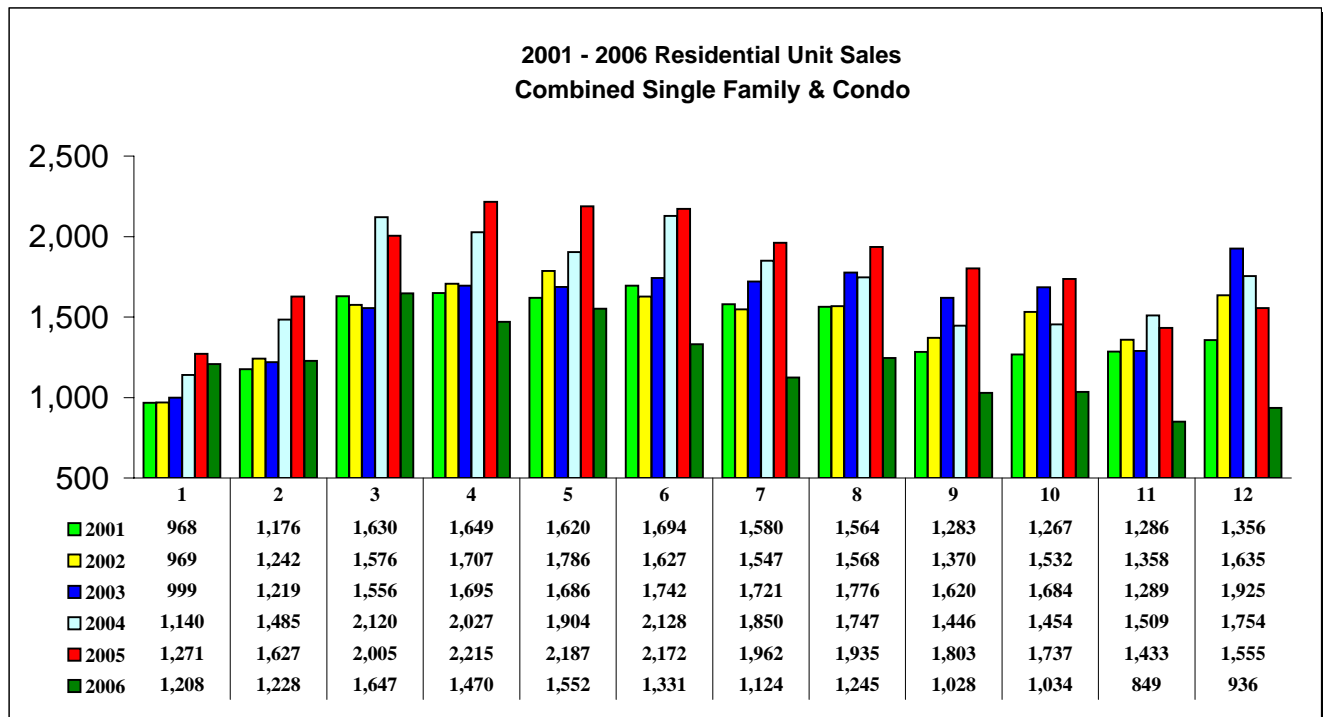
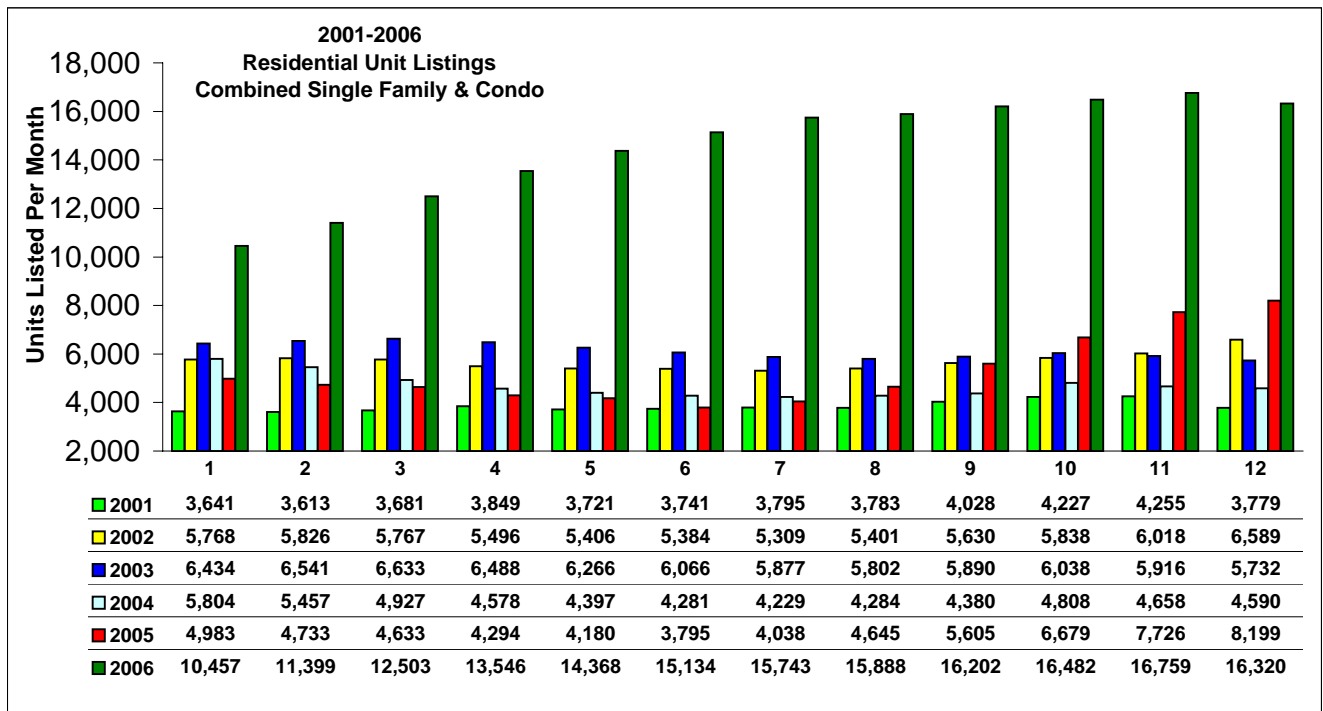
Absorption Rate ^{**}									
	Single Family					Condo			
	2003	2004	2005	2006		2003	2004	2005	2006
Jan	14.4%	17.3%	23.5%	12.9%	18.2%	25.6%	29.5%	9.6%	
Feb	17.1%	25.4%	34.3%	12.2%	22.3%	32.1%	34.5%	8.8%	
Mar	22.3%	39.1%	43.4%	14.7%	26.2%	53.7%	43.0%	11.0%	
Apr	24.0%	41.3%	46.3%	11.5%	31.4%	52.3%	62.2%	9.9%	
May	25.3%	41.2%	52.8%	12.5%	31.2%	49.0%	51.5%	8.3%	
Jun	28.0%	45.6%	59.2%	10.5%	30.7%	61.7%	53.6%	6.2%	
Jul	29.2%	42.0%	51.5%	8.6%	29.6%	48.7%	43.6%	4.8%	
Aug	28.3%	38.2%	43.2%	7.9%	37.5%	48.9%	39.3%	7.7%	
Sep	27.0%	30.4%	35.7%	7.0%	28.8%	40.8%	26.7%	5.3%	
Oct	27.8%	27.0%	25.5%	7.2%	28.2%	39.4%	26.9%	4.7%	
Nov	20.9%	30.1%	21.5%	5.7%	24.2%	38.2%	13.9%	4.0%	
Dec	28.4%	21.2%	21.7%	6.8%	47.1%	23.1%	15.0%	4.1%	

Pinellas Realtor Organization

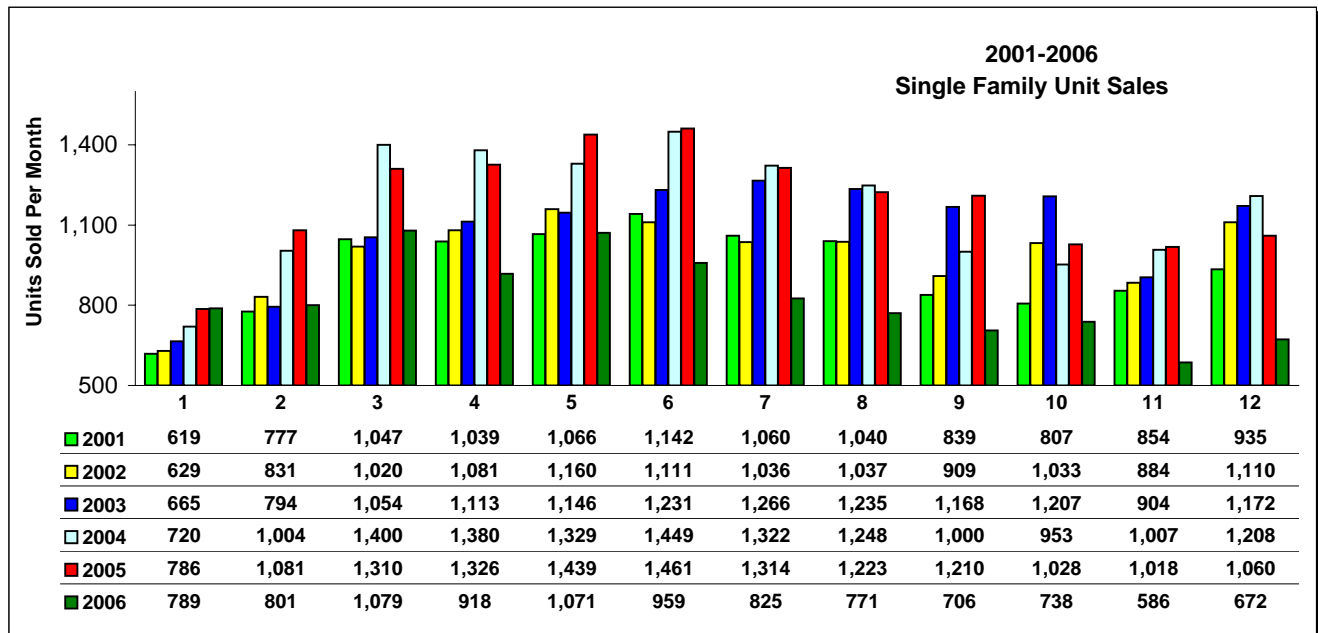
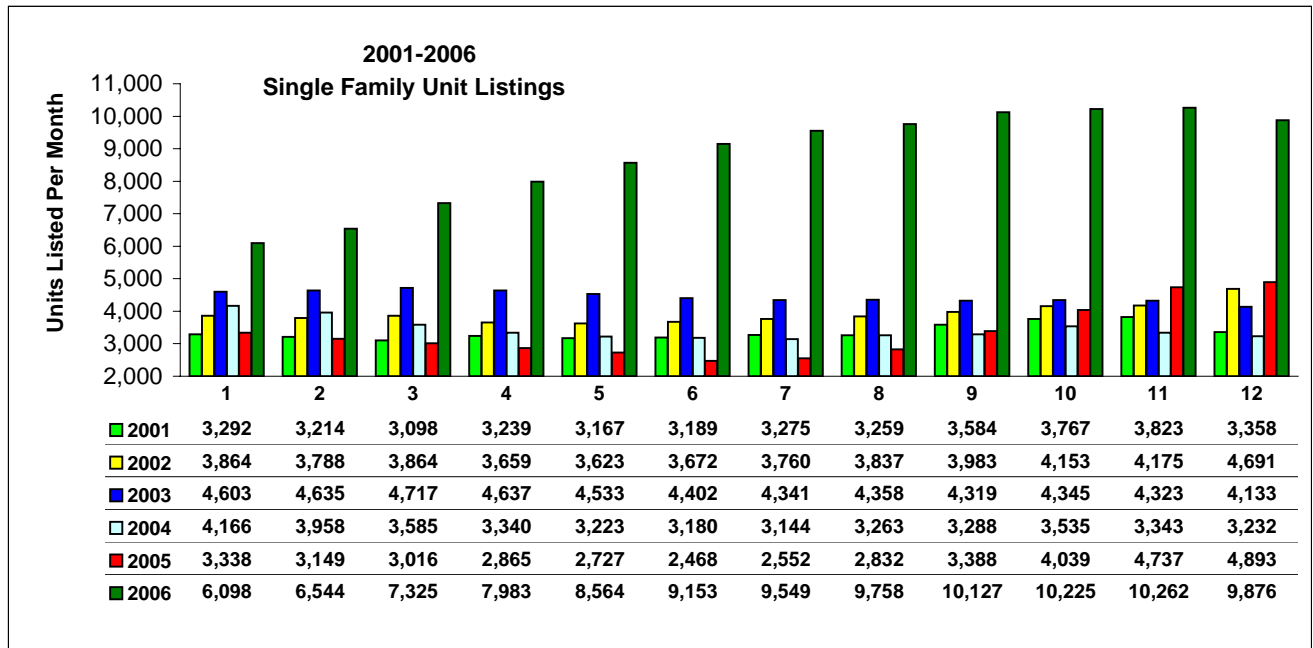
Additional Information
Absorption Rate (Inventory Turnover) is determined by dividing the number of units sold during the month by the total number of listings in the MLS.
Residential Graphical data represents the combined Single Family & Condo Sales data.
GCAR/SSAR data combined to determine 2001 totals for comparison.
PRO Statistics

Residential Listing and Sales Comparison by Unit

Combined Single Family and Condo Data



Single Family Listing and Sales Comparison by Unit



Condo Listing and Sales Comparison by Unit

